

West

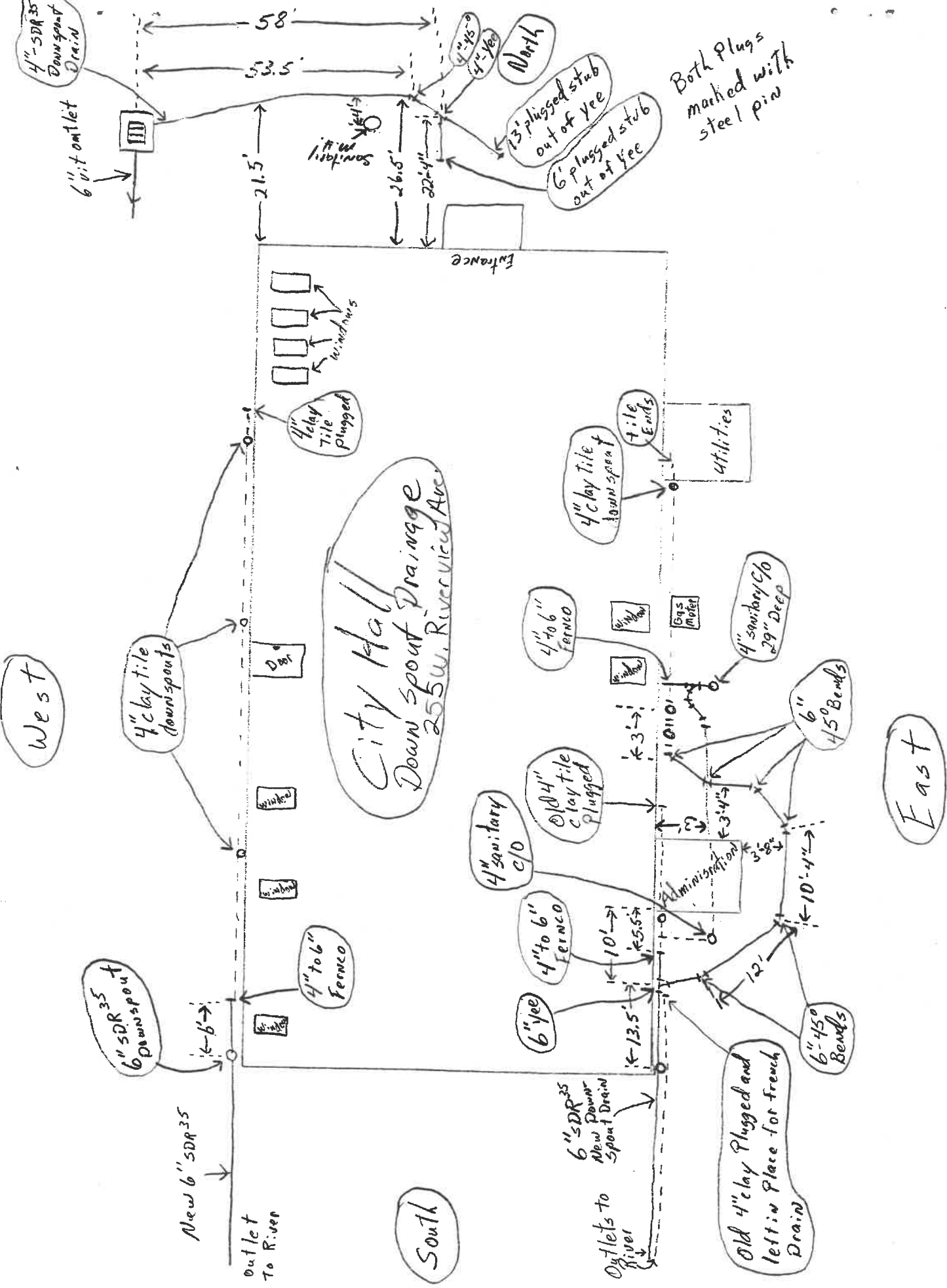
East

South

City Hall
Downspout Drainage
255 W. Riverview Ave.

Both Plugs
marked with
steel pin

Old 4" clay Plugged and
left in Place for french
Drain



West

East

South

City Hall
Downspout Drainage
255 W. Riverview Ave.

Both Plugs
marked with
steel pin

Old 4" clay Plugged and
left in Place for french
Drain

